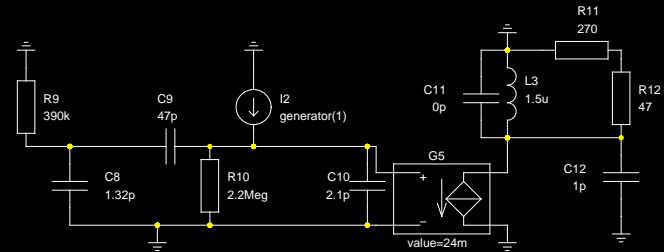


Stage1 314uA WHITE  
related to input 5nA

TOTAL WHITE 176nA  
TOTAL BLUE 82nA weight 1/3  
-----  
TOTAL 203nA



```

A1 Gnuicap directive .include sim/models/bfr90_worst.lib
A10 Gnuicap directive .include sim/models/bfr90_best.lib
A11 Gnuicap directive .include sim/models/bfr91_worst.lib
A12 Gnuicap directive .include sim/models/bfr91_best.lib
A2 Gnuicap directive .include sim/models/bfr91a_worst.lib
A3 Gnuicap directive .include sim/models/bfr91a_best.lib
A4 Gnuicap options numdgt=9 out=10000 clobber rstray
A5 Gnuicap directive .op
A6 Gnuicap directive .print ac imdb(G3) imdb(G4) vp(G3) vp(G4)
A7 Gnuicap directive .ac 11k 9.5G Dec 50 >sim/fel.data Basic Quiet
A8 Gnuicap directive .print ac im(C2) im(G2) im(G4) im(G5)
A9 Gnuicap directive .ac 10Meg >sim/fel2.data Basic Quiet
  
```

<h1>Coil Frontend</h1>			
TITLE			
FILE:	To be released under GFDL	REVISION:	20081102
PAGE:	1	OF	1
		DRAWN BY:	Clock