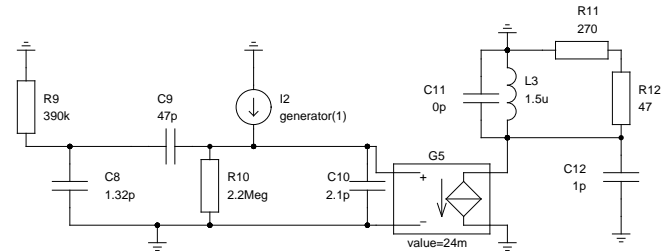


Stage1 314uA WHITE
related to input 5nA

TOTAL WHITE 176nA
TOTAL BLUE 82nA weight 1/3

TOTAL 203nA



A1	Gnucap directive	.include sim/models/bfr90_worst.lib
A10	Gnucap directive	.include sim/models/bfr90_best.lib
A11	Gnucap directive	.include sim/models/bfr91_worst.lib
A12	Gnucap directive	.include sim/models/bfr91_best.lib
A2	Gnucap directive	.include sim/models/bfr91a_worst.lib
A3	Gnucap directive	.include sim/models/bfr91a_best.lib
A4	Gnucap options	numdgt=9 out=10000 clobber rstray
A5	Gnucap directive	.op
A6	Gnucap directive	.print ac imdb(G3) imdb(G4) vp(G3) vp(G4)
A7	Gnucap directive	.ac 11k 9.5G Dec 50 >sim/fel.data Basic Quiet
A8	Gnucap directive	.print ac im(C2) im(G2) im(G4) im(G5)
A9	Gnucap directive	.ac 10Meg >sim/fel2.data Basic Quiet

Coil Frontend

TITLE			REVISION:	20081102
FILE:	To be released under GFDL		DRAWN BY:	Clock
PAGE:	1	OF	1	