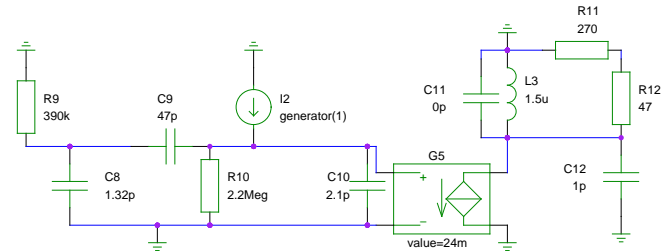


Stage1 314uA WHITE
related to input 5nA

TOTAL WHITE 176nA
TOTAL BLUE 82nA weight 1/3

TOTAL 203nA



- A1 Gnuicap directive .include sim/models/bfr90_worst.lib
- A10 Gnuicap directive .include sim/models/bfr90_best.lib
- A11 Gnuicap directive .include sim/models/bfr91_worst.lib
- A12 Gnuicap directive .include sim/models/bfr91_best.lib
- A2 Gnuicap directive .include sim/models/bfr91a_worst.lib
- A3 Gnuicap directive .include sim/models/bfr91a_best.lib
- A4 Gnuicap options numdgt=9 out=10000 clobber rstray
- A5 Gnuicap directive .op
- A6 Gnuicap directive .print ac imdb(G3) imdb(G4) vp(G3) vp(G4)
- A7 Gnuicap directive .ac 11k 9.5G Dec 50 >sim/fel.data Basic Quiet
- A8 Gnuicap directive .print ac im(C2) im(G2) im(G4) im(G5)
- A9 Gnuicap directive .ac 10Meg >sim/fel2.data Basic Quiet

Coil Frontend

TITLE		REVISION: 20081102	
FILE: To be released under GFDL	PAGE 1 OF 1		DRAWN BY: Clock