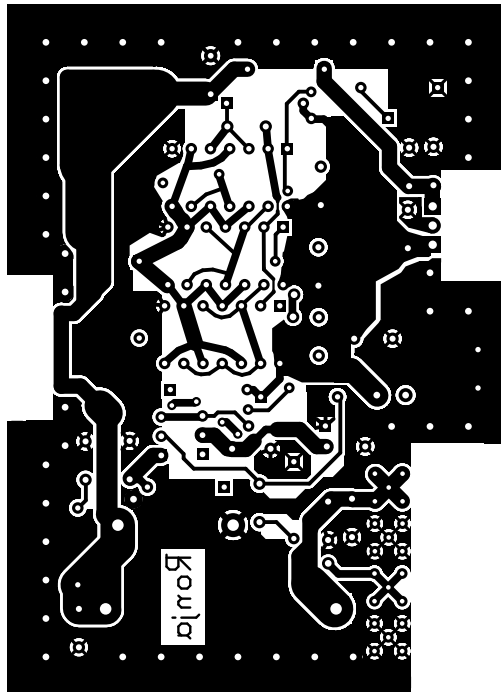
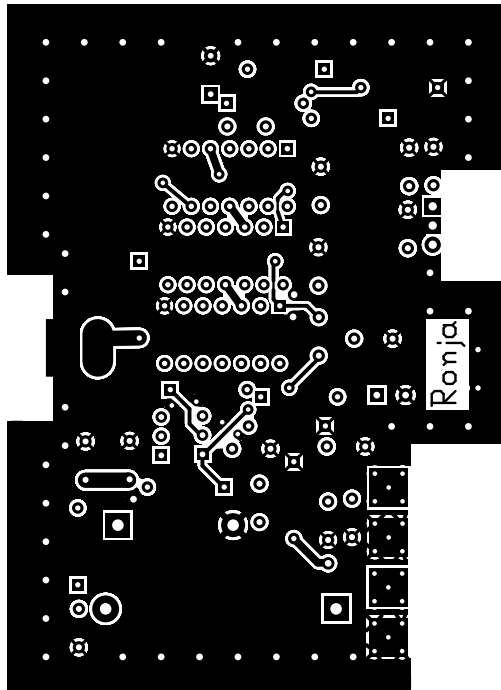


2. solder
3. component
4. outline
5. componentmask
6. soldermask
7. plated-drill
8. topsilk
9. bottomsilk
10. bottompaste
11. toppaste
12. topassembly
13. bottomassembly
14. fab

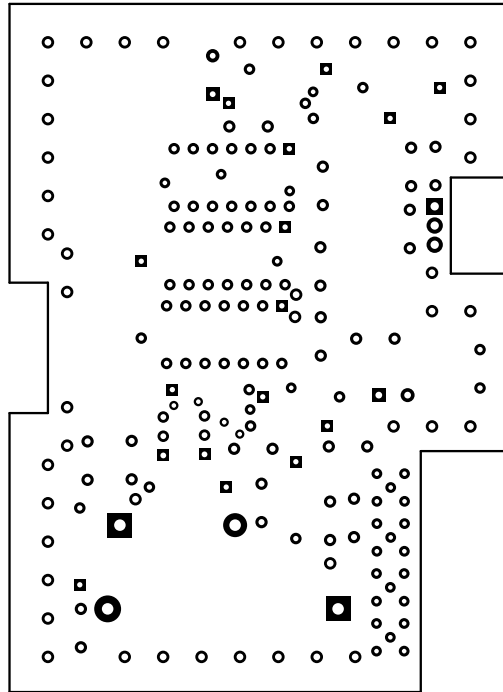
Layer solder



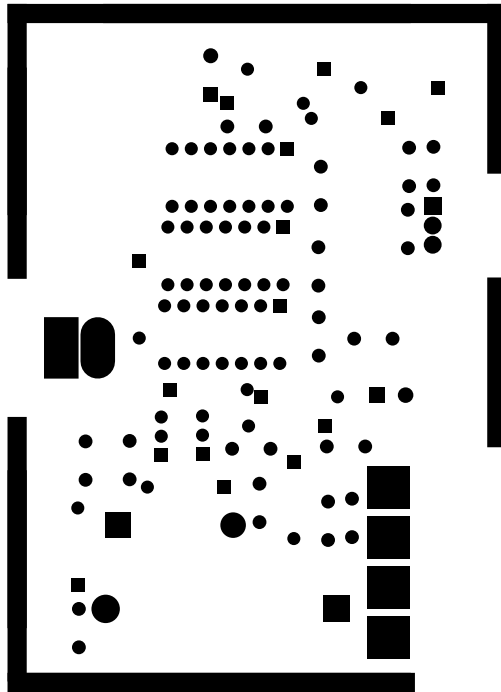
Layer component



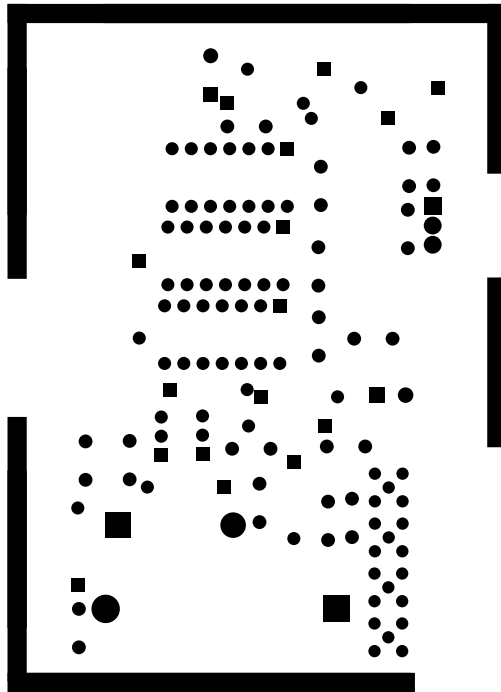
Layer outline



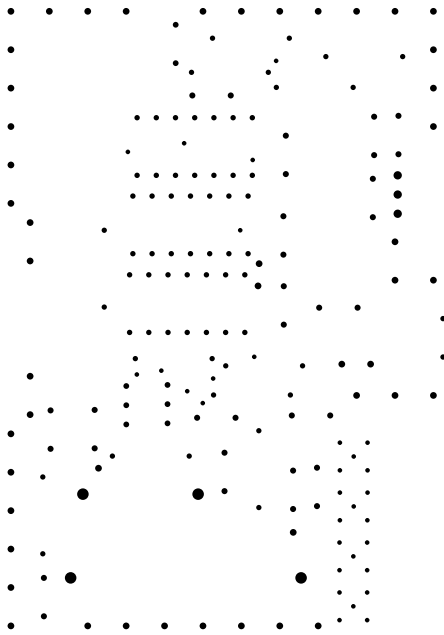
Layer componentmask



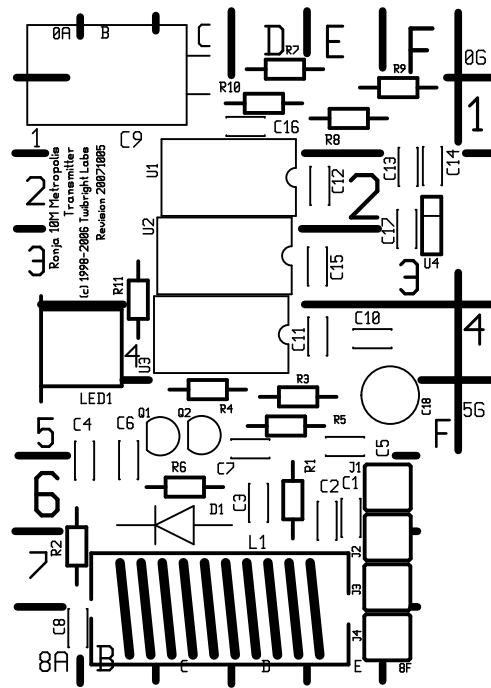
Layer soldermask



Layer plated-drill

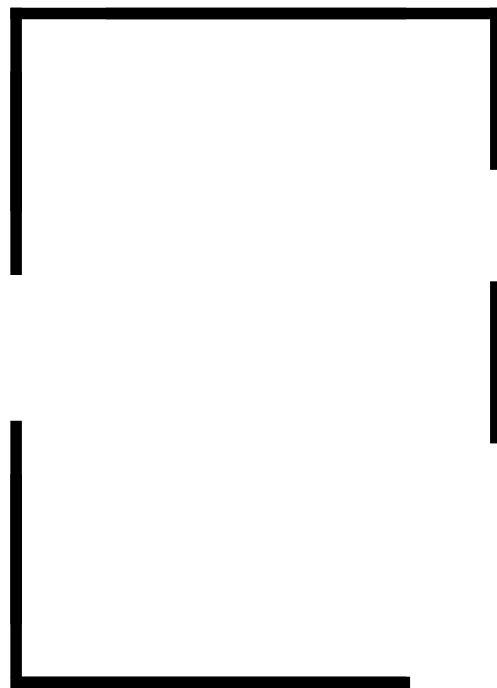


Layer topsilk

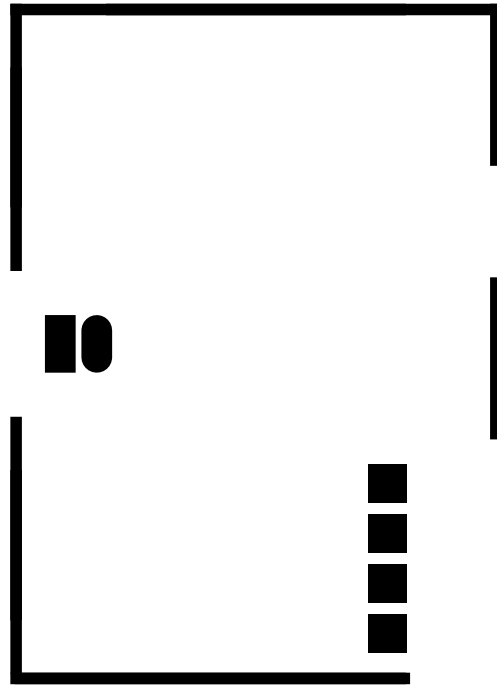


Layer bottomsilk

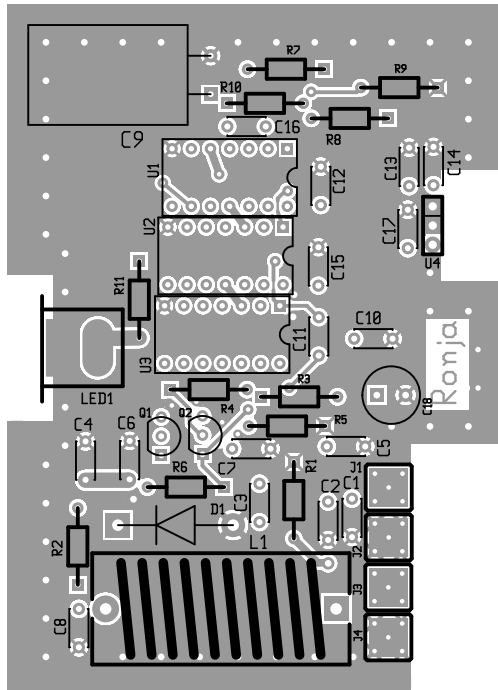
Layer bottompaste



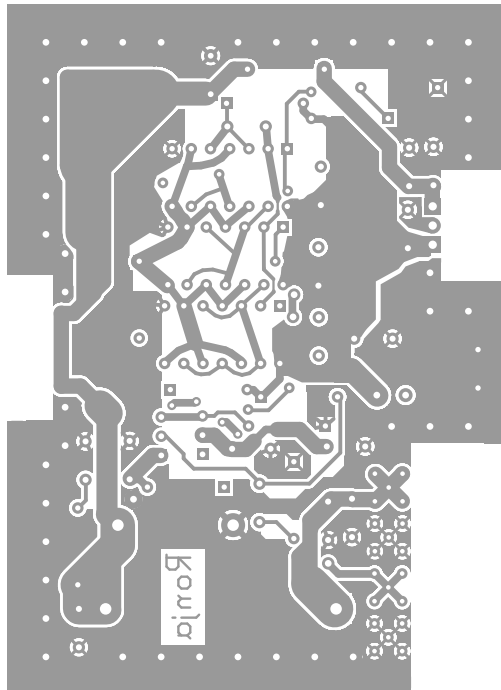
Layer toppaste



Layer topassembly



Layer bottomassembly



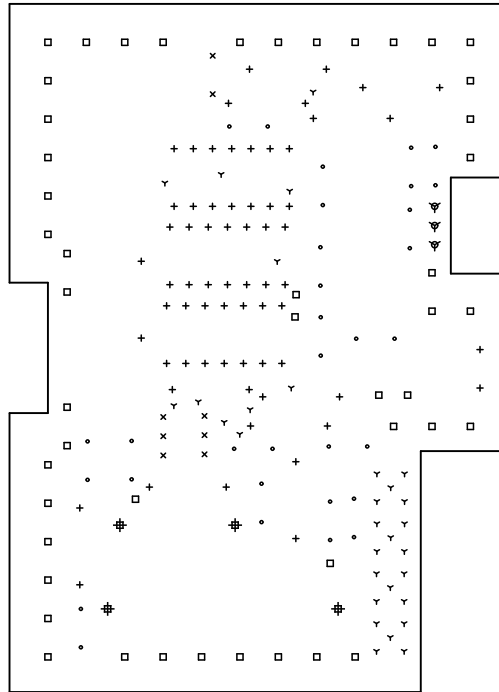
There are 7 different drill sizes used in this layout, 192 holes total

Symbol	Diam. (Inch)	Count	Plated?
γ	0.024	31	YES
+	0.028	66	YES
x	0.030	8	YES
•	0.031	32	YES
□	0.035	48	YES
▽	0.043	3	YES
#	0.060	4	YES

Title: Ronja 10M Metropolis Transmitter - Fabrication Drawing

Author:

Date: Tue Oct 9 06:53:26 2007 UTC



Board outline is the centerline of this path